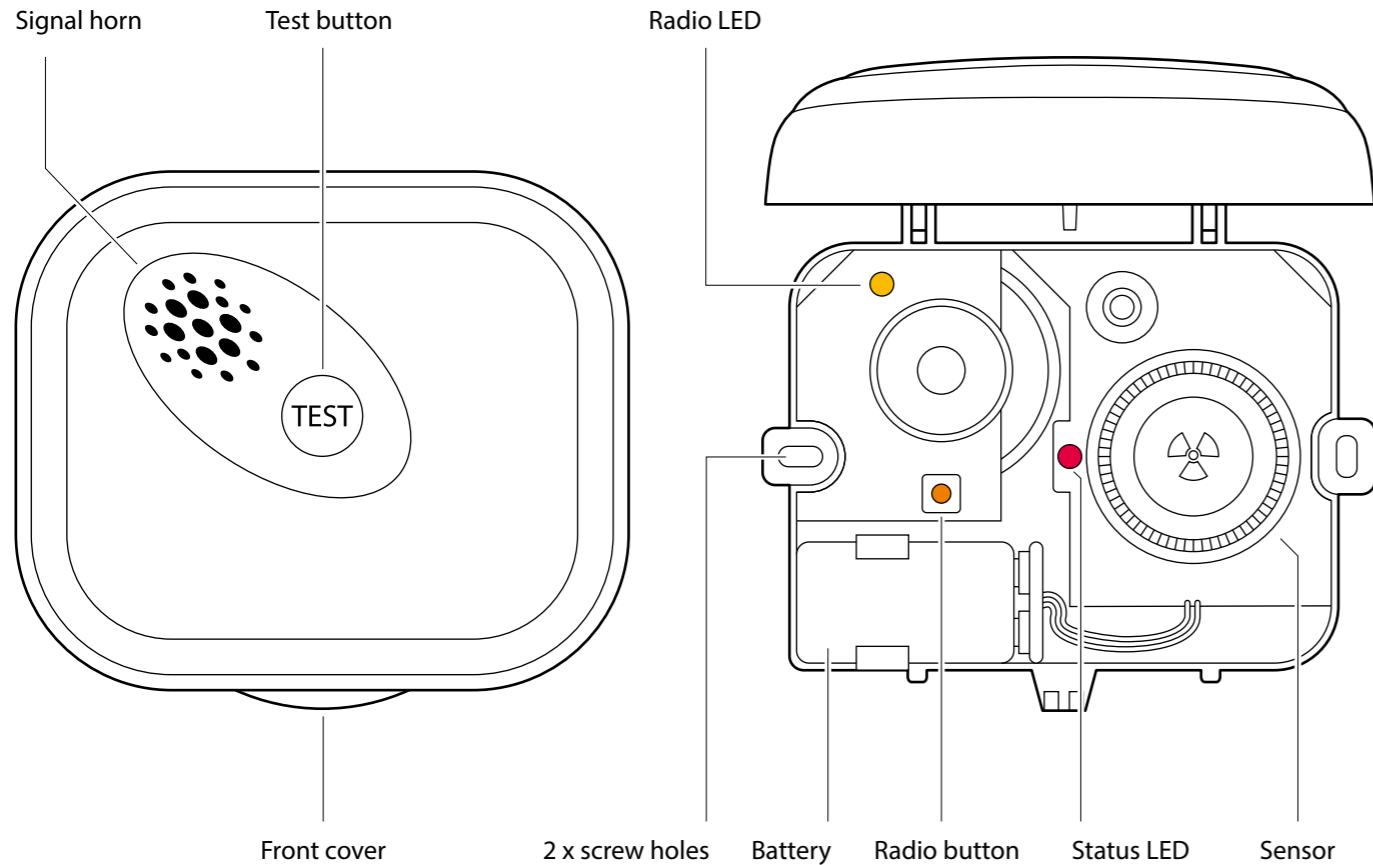




# Visit smoke alarm

## Overview



## Technical specifications

### In the box

- BE1551 Visit smoke alarm
- 1 x 9 V alkaline battery
- 2 x screws and plugs
- User manual

### Power and battery

- Battery type  
Duracell MN1604  
9 V alkaline battery
- Power consumption  
Idle position < 15 µA
- Battery life  
Minimum 3 years

### Size and weight

- Height: 118 mm, 4.6"
- Width: 140 mm, 5.5"
- Depth: 42 mm, 1.6"
- Weight: 200 g, 7 oz. incl. battery

### Sensor type

- Ionization smoke detection

### Audible alarm

- Min 85 dB(A) @ 3m (10'), 2.6 kHz

### Activation

- Via the test button
- Via the built-in smoke detector

### Frequency and coverage

- Radio frequency  
868.30 MHz
- Coverage: Up to 200 m (218 yd.), clear line of sight. It depends on the building's characteristics and radio conditions.

### Environment

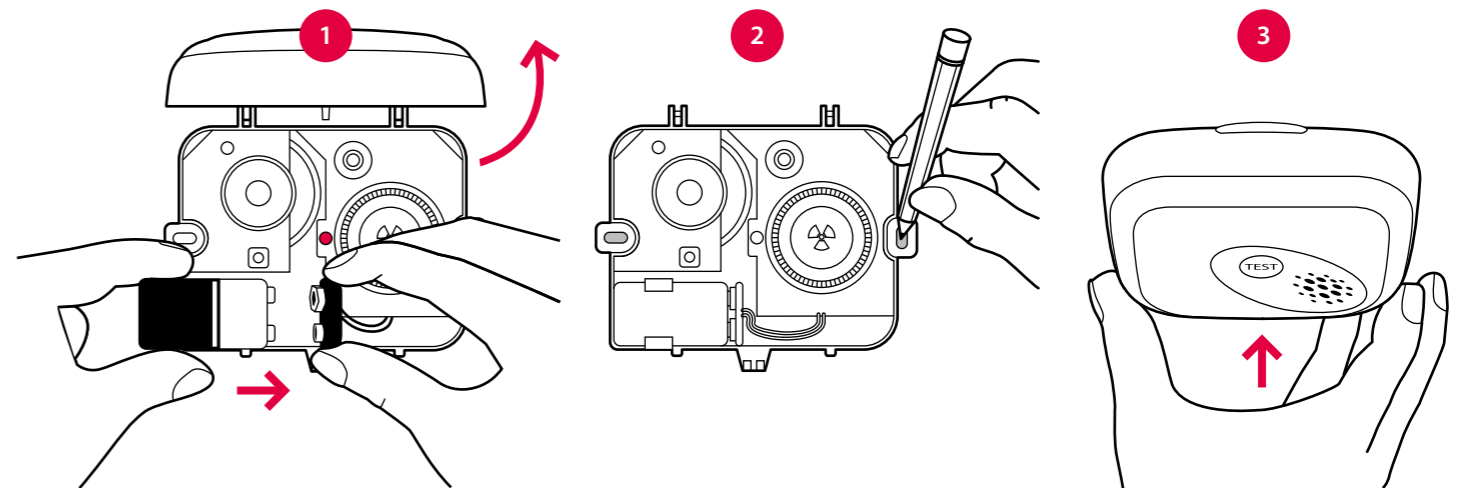
- For indoor use only
- Operating temperature  
4° till 40° C, 39° to 104° F
- Relative humidity  
15% to 95% RH, non-condensing

### Smoke sensitivity

- Meets the BS EN 14604:2005 standard

## Setting up the smoke alarm

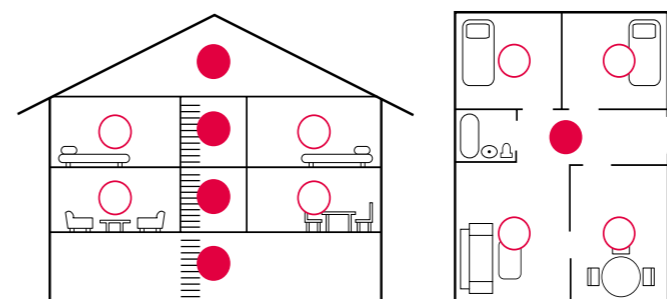
- Remove the front cover by rotating it fully backwards and connect the battery to the battery snaps to start the unit. The alarm will chirp during startup.
- Mark the location of the screw holes and fix the smoke alarm to the ceiling using the supplied screws and plugs. Mount it at least 30 cm, (12") from walls and other obstructions, see **Location and positioning** below.
- Put the cover back on the smoke alarm by pressing gently until it snaps into place.



## Location and positioning

Fit the smoke alarms in the center of the ceiling outside the bedrooms, at least 30 cm from any wall. If the bedrooms are in different areas of the house, separate smoke alarms are recommended. In multi-storey properties, install at least one smoke alarm on each floor.

Avoid kitchens, fireplaces or garages, as cooking fumes and car exhaust may cause false alarms. The smoke alarm should not be installed in damp spaces, close to fans, etc. or in agricultural buildings.

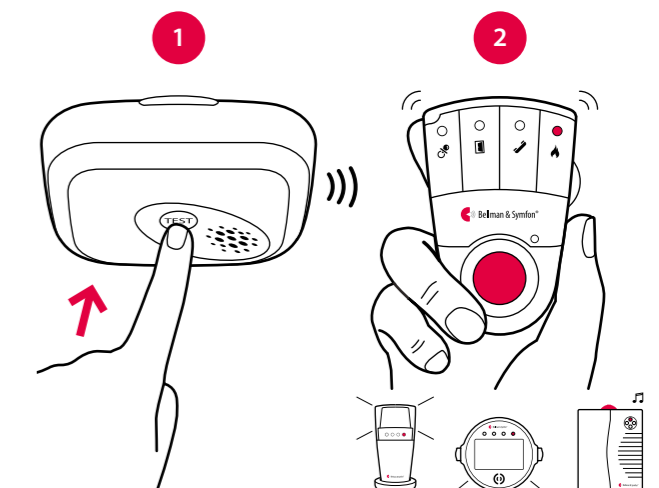


- = Minimum
- = Additional

## Testing the connection

- Press and hold the smoke alarm test button until the alarm sounds. The smoke alarm transmits a radio signal to the receiver.
- The red Visit LED on the receiver lights up to show that the signal was received. In addition, it starts to sound, flash or vibrate depending on the receiver.


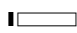
**Please note:** The smoke alarm will stop sounding shortly after the button is released and the receiver will time out within 40s.



# Visit smoke alarm

## Signal pattern

The smoke alarm LED blinks in red once per minute to show that it is working correctly. Depending on the alarm, the signal patterns are as follows:

Smoke alarm			Receiver signal pattern			
Alarm type	LED	Sound	Visit LED	Sound	Vibration	Flash
■ Fire detected	Red blinks	Fire alarm	Red blinks	Fire alarm	Long 	Yes
■ Low battery	1 red blink / min	1 beep / min	1 red blink / 5 s	1 short alarm	Short 	No

### Please note:

When the smoke alarm warns for low battery, you have at least 30 days to replace it. Bed shakers connected to the BE1580 Alarm clock or the BE1441/BE1442 Flash receiver will not vibrate when the smoke alarm battery level is low.

## Using broadcast

If you want the smoke alarm signal to be transmitted to **all** Visit receivers within radio range, you can activate broadcast mode. This will override the radio key settings.

### Here is how you activate broadcast mode:

- 1 Open the smoke alarm front cover to access the radio button, see **Overview**.
- 2 Press the radio button three times in quick succession. The radio LED blinks three times to show that broadcast mode is activated.

**Please note:** Battery warnings will only be transmitted to units with the same radio key. To disable broadcast, you need to select a new radio key, see **Changing the radio key** on the following page.

## Test interval

Test the smoke alarm and radio connection regularly, preferably each week, e.g. during cleaning, but at least once per month. Always test it immediately after any holidays or other extended periods of absence. Clean it with a damp cloth. After changing battery, vacuum clean with a soft brush. Do not paint over the smoke alarm.

## Troubleshooting

If	Try this
Nothing happens when I press the smoke alarm test button	<ul style="list-style-type: none"> <li>■ Check that the battery snaps are firmly connected.</li> <li>■ Replace the smoke alarm battery. Only use a Duracell MN1604 alkaline battery.</li> <li>■ Check the age of the unit, see the "replace by" label on the sidewall of the unit.</li> </ul>
The smoke alarm beeps when I press the test button, but the Visit receiver is not responding	<ul style="list-style-type: none"> <li>■ Check the smoke alarm battery and the receiver batteries and connections.</li> <li>■ Move the receiver closer to the smoke alarm to make sure it's within radio range.</li> <li>■ Check that the units are set to the same radio key, see <b>Changing the radio key</b>.</li> </ul>
The Visit receiver is activated for no apparent reason	<ul style="list-style-type: none"> <li>■ Change the smoke alarm battery if the red Visit LED indicates low battery.</li> <li>■ If the problem persists, there is probably another Visit system nearby that triggers yours. Change the radio key on all units, see <b>Changing the radio key</b>.</li> </ul>
The smoke alarm beeps and chirps for no apparent reason	<ul style="list-style-type: none"> <li>■ Check for fumes or steam from the kitchen or bathroom. Check for any sign of contamination such as cobwebs or dust. If the problem persists, replace the unit.</li> </ul>

## Changing the radio key

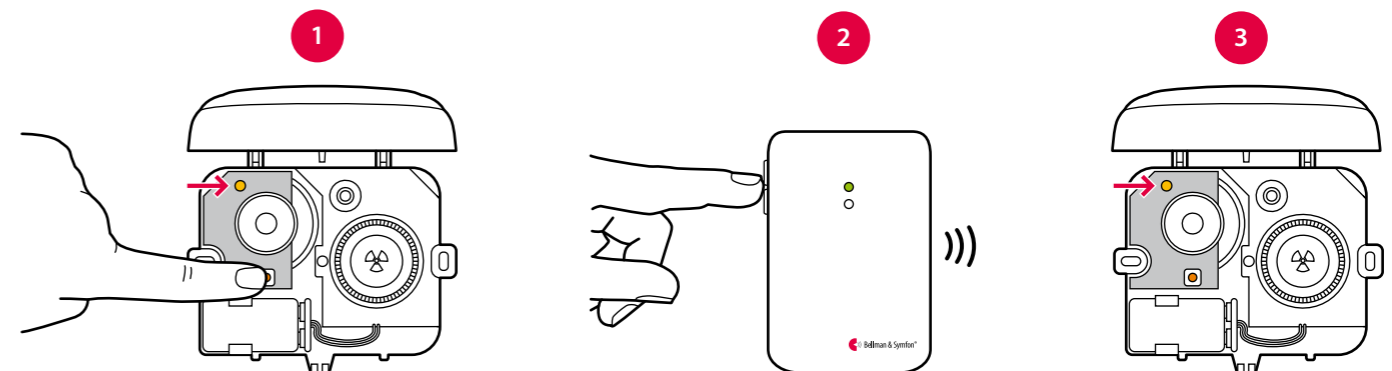
If your Visit system is activated for no reason, there is probably a nearby system that triggers yours. In order to avoid radio interference, you need to change the radio key on all units.

### Systems with different types of transmitters

Start by changing the radio key on all **other** transmitters in the system by moving any of the radio key switches, see the corresponding user manual. Note that all transmitters must be set to the same radio key to operate as a group.

### Changing the radio key on the BE1551 Smoke alarm

- 1 Open the front cover on the BE1551 Smoke alarm to access the radio button, see **Overview**. Press and hold the radio button until the radio LED flashes slowly in yellow. Release the button.
- 2 Press the test button on any **other** transmitter within 30 s to transmit the new radio key.
- 3 The radio LED on the BE1551 Smoke alarm lights up in yellow to show that the radio key has been changed.



### Changing the radio key on a receiver

- 1 Press and hold the test/function button on the receiver until the green and yellow Visit LEDs blink alternately. Release the button.
- 2 Press the test button on any transmitter within 30 s to transmit the new radio key.
- 3 All Visit LEDs on the receiver blink 5 times to show that the radio key has been changed.

### Systems with only BE1551 Smoke alarms

#### Changing the radio key on the smoke alarms

Select one of the BE1551 Smoke alarms that will function as the **master** unit. The other BE1551 Smoke alarm will function as a **slave** unit. Open the front cover on the units to access the radio button, see **Overview**.

- 1 Press and hold the radio button on the **master** unit until the radio LED blinks slowly in yellow. Press and hold the button again to generate a new radio key. The radio LED blinks faster to confirm.
- 2 Press and hold the radio button on the **slave** unit until the radio LED blinks slowly in yellow.
- 3 Press and hold the test button on the **master** unit to transmit the new radio key. The alarm will sound to confirm.
- 4 The radio LED on the **slave** unit lights up in yellow to show that the radio key has been changed.

Repeat steps 2 - 4 to change the radio key on an additional BE1551 Smoke alarm.

#### Changing the radio key on a receiver

- 1 Press and hold the test/function button on the receiver until the green and yellow Visit LEDs blink alternately. Release the button.
- 2 Press and hold the test button on any smoke alarm within 30 s to transmit the new radio key. The alarm will sound to confirm.
- 3 All Visit LEDs on the receiver blink 5 times to show that the radio key has been changed.